



Ms Golinska – Headteacher



Mr Lamboi - Head of Year 10

Welcome!

Year 10 Parents'/Carers' Workshop

The aim of this workshop is to help you support your child through their GCSE and vocational qualifications.



Ms T Gray – Deputy Headteacher



Year 10 Parents' Workshop - Agenda

Curriculum and Assessment at Key Stage 4

- Ms T Gray- Deputy Headteacher
- Information from the core areas

How you can support your child?

- Mr Lamboi



The Year 10 Curriculum

The 3 option choices

En	En	En	En	En	Ma	Ma	Ma	Sc	Sc	Sc	Sc	Sc	1	1	1	2	2	2	3	3	3	PE	PE	PSE
													Sc											

In Year 11 the school day is extended and we add additional time to the end of the day for extra core and option subject lessons.



Assessment Approach

Assessment Cycle 1	Assessment Cycle 2	Assessment Cycle 3
In class assessments Wb 3rd Nov 2025 Parent's Evening 4th Dec 2025	Year 10 mock exams in the main exam venue wb 2nd Feb 2025	Year 10 mock exams in the main exam venue 22nd Jun - 3rd Jul 2025



Support & Ensuring Good Progress

Effort
Attainment
Homework &
Independent Study

Pastoral Programme

Monitoring your child's performance; implementing interventions:

- Senior Leaders
- Heads of Department
- Mr Lamboi (HoY)
- Ms Milward (DHoY)
- Class Teachers

PSHE & PE

SEND

Wellbeing Interventions
& Support



Core Curriculum and Assessment at Key Stage 4

- Mr Sawbridge - Head of English
- Ms Ahmad- Head of Mathematics
- Dr Stackhouse – Head of Science
- Ms Hodgson- Vocational Lead





GCSE English Language & Literature

- 5 x lessons a week
- Fortnightly booster and revision quizzes in tutor time (Year 11)
- 2 x GCSEs: English Language and English Literature
- Both courses are assessed by external examination only
- 50% reading, 50% writing, AQA exam board
- Single tier entry
- Revision guides, websites, texts, YouTube revision channels, and podcasts are all available to students
- Visit the English office or follow the links in the parent information booklet





GCSE English Language & Literature

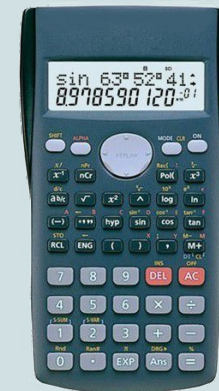
- Students will sit FOUR examination papers: English Language x 2; English Literature x 2
- Every student will sit the **same** exam papers (no tiered exams)
- Every student will complete the Spoken Language Endorsement: Pass, Merit or Distinction

AQA Language Paper 1 <i>1hr 45mins</i>	AQA Language Paper 2 <i>1hr 45mins</i>	AQA Literature Paper 1 <i>1hr 45mins</i>	AQA Literature Paper 2 <i>2hr 15mins</i>
Section A: Reading <ul style="list-style-type: none"> • One literature fiction text • 4 questions 	Section A: Reading <ul style="list-style-type: none"> • One non-fiction text and one literary non-fiction text • 4 questions 	Shakespeare <ul style="list-style-type: none"> • 'Macbeth' • 1 extract essay question 	Modern prose/drama <ul style="list-style-type: none"> • 'Animal Farm' by George Orwell (11R1 & 11R2 only) or 'An Inspector Calls' by J.B. Priestley (all other classes) • 1 essay question
Section B: Writing <ul style="list-style-type: none"> • Descriptive or narrative writing • 1 extended writing question 	Section B: Writing <ul style="list-style-type: none"> • Writing to present a viewpoint (letters, articles, speeches) • 1 extended writing question 	19th Century novel <ul style="list-style-type: none"> • 'A Christmas Carol' by Charles Dickens • 1 extract essay question 	Poetry <ul style="list-style-type: none"> • AQA 'Power and Conflict' poetry anthology. 1 comparative essay • Unseen poetry. 2 short essays



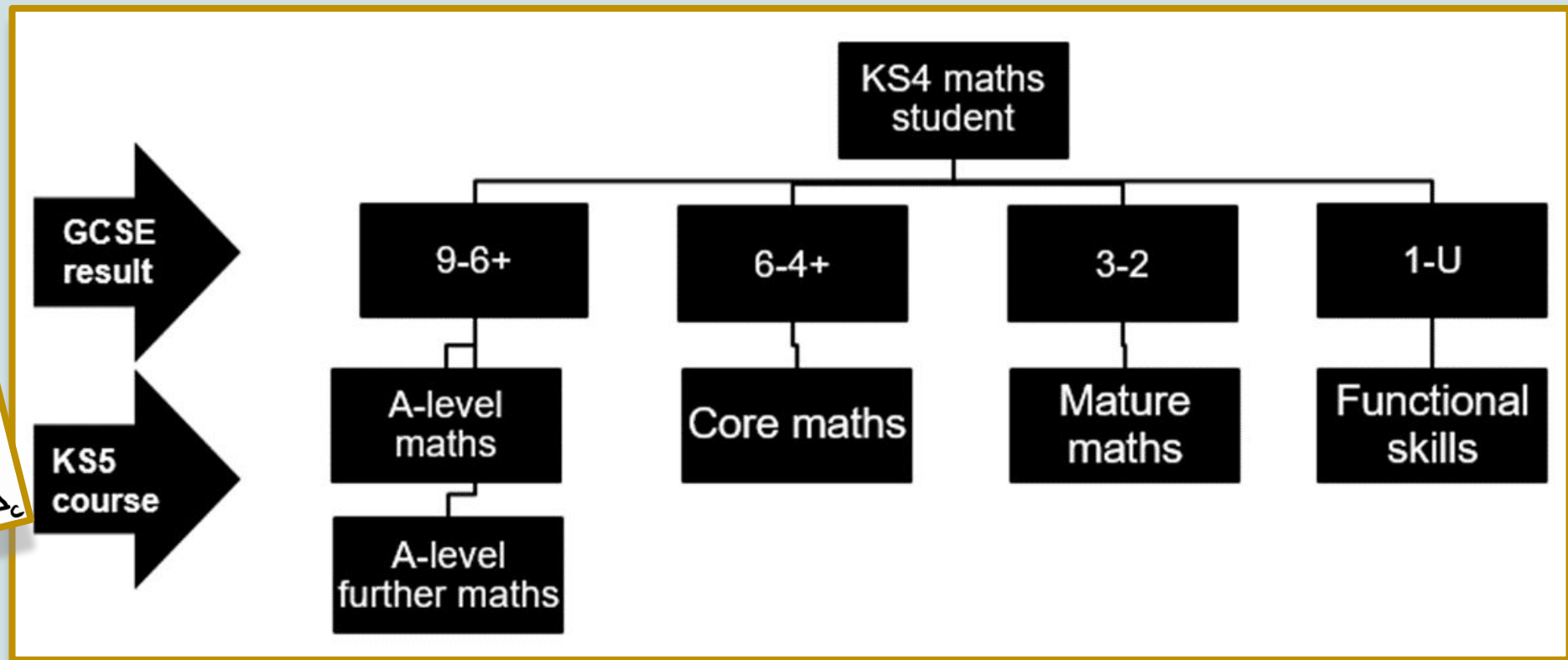
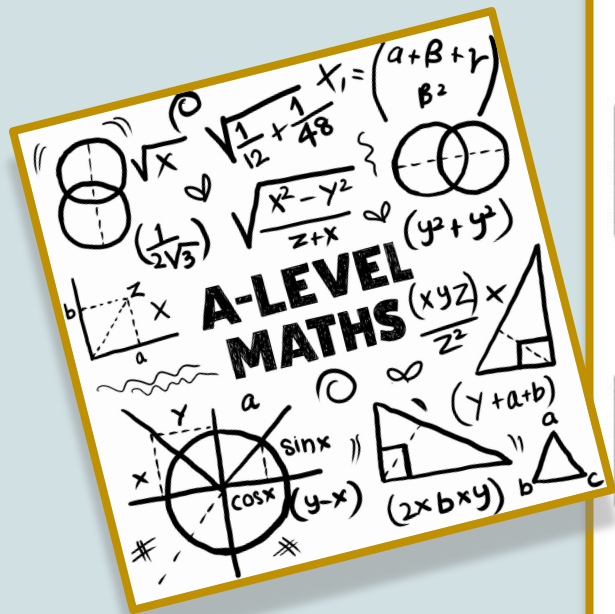
GCSE Mathematics

- x3 lessons a week in Y10 and x4 lessons in Y11
- Fortnightly booster and revision quizzes in tutor time (Year 11)
- Students will sit three examination papers, two calculator and one non-calculator paper, 1 hours 30 minutes each
- Two tier entry - Higher and Foundation
- OCR Exam board
- Homework set weekly
- Students are assessed regularly (first assessment before half term)
- Exam booklets, revision lists , guides (£3.50), Sparx Maths





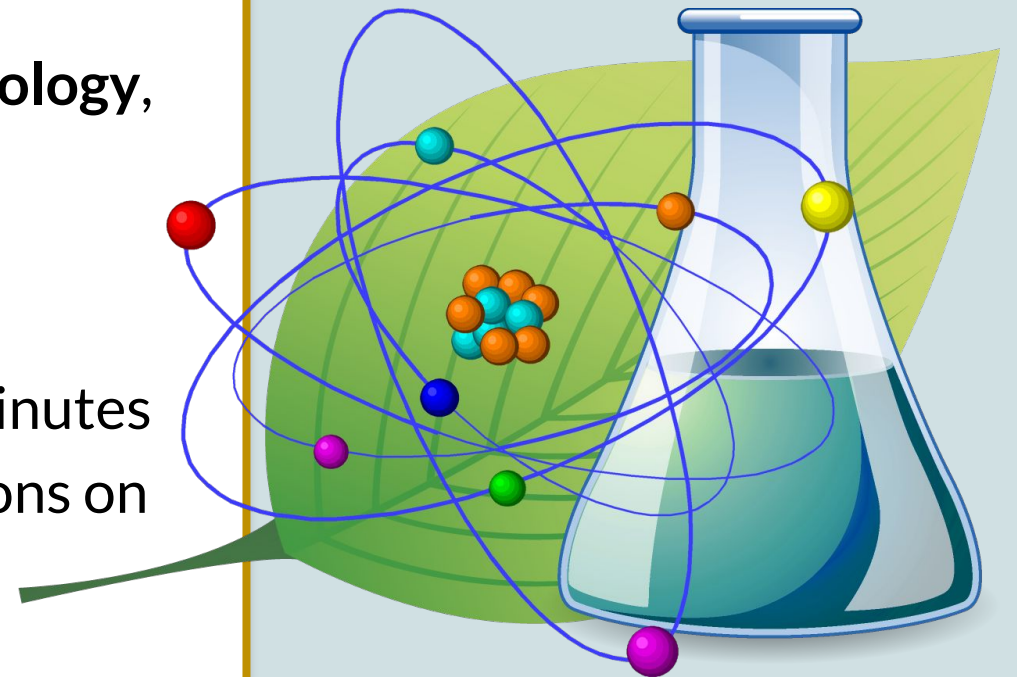
Mathematics - KS5 Options





GCSE Combined Science - AQA

- Five lessons per week in year 10, normally split between two teachers
- Six lessons per week in year 11, two each of **biology**, **chemistry** and **physics**
- Assessment: Exam only
- 3 mock exams at the end of year 10
- 6 GCSE exams in year 11; Each is 1 hour 15 minutes
- Two tiers: foundation and higher. (Final decisions on tiers won't happen until year 11.)





GCSE SCIENCE COURSE CONTENT

Biology

Paper 1

Biology topics 1–4: Cell Biology; Organisation; Infection and response; and Bioenergetics.

Paper 2

Biology topics 5–7: Homeostasis and response; Inheritance, variation and evolution; and Ecology.

Chemistry

Paper 1

Chemistry topics 1-5: Atomic structure and the periodic table; Bonding, structure, and the properties of matter; Quantitative chemistry; Chemical changes; and Energy changes.

Paper 2

Chemistry topics 6-10: The rate and extent of chemical change; Organic chemistry; Chemical analysis; Chemistry of the atmosphere; and Using resources.

Physics

Paper 1

Physics topics 1-4: Energy; Electricity; Particle model of matter; and Atomic structure.

Paper 2

Physics topics 5-7: Forces; Waves; and Magnetism and electromagnetism (also space for triple only)



GCSE Combined Science - AQA

- Combined science is a double award - students will get two grades and it counts as two GCSEs
- Both higher and foundation papers have access to the benchmark grades (4-4 to 5-5)
- The grades are worked out from an average of the student's score across biology, chemistry and physics





GCSE Triple Science - AQA

- Similar to combined science but with a bit more content
- Each exam is 1 hour 45 minutes
- Students taking the triple paper will be expected to be working to take the higher tier paper
- Triple science is three separate GCSEs - **biology, chemistry and physics**
- Students will get a separate grade for each subject



GCSE Science - Resources

- Revision guides are available for £6 through My Child at school.
- There are also CGP workbooks available in other stores
- The website 'physics and maths tutor' has a wide range of past paper questions, or Google 'AQA combined science past papers'
- Resources are posted to Google Classroom
- Seneca and Educake websites for quick revision





Science - KS 5 Options

A-Levels

- Biology
- Chemistry
- Physics

Students can take these whether they are taking combined science OR triple science.

Minimum grade 6-6, preferably a grade 7 or above

BTEC Science

Vocational qualification covering aspects of **biology**, **chemistry** and **physics** with a more practical emphasis.

Minimum grade 5-5 or above





Vocational

What are vocational qualifications? - Courses that combine exams and coursework, focusing on developing skills and knowledge for specific careers.


Stigma - "BTECs are not as important as GCSEs" - They actually have the same value as GCSEs!

Courses we offer - Travel and Tourism, Health and Social Care, Performing Arts, Sports and Dance.

Progression - Good progression to all Level 3 courses.

Vocational

Coursework units under exam conditions.



	Year	Weighting	Type of Assessment
Component 1	10	30%	Internal - PSA
Component 2	10/11	30%	Internal - PSA
Component 3	11	40%	External Exam

Component 1, 2 and 3 = **Final Grade**

BTEC Tech Awards	GCSE
Level 2 Distinction*	8/9
Level 2 Distinction	6/7
Level 2 Merit	5
Level 2 Pass	4
Level 1 Distinction	3
Level 1 Merit	2
Level 1 Pass	1
Unclassified	Fail



Example

	Year	Type of Assessment	Grade
Component 1	10	Internal - PSA	L1D
Component 2	10/11	Internal - PSA	L2P
Component 3	11	External Exam	L2M

BTEC Tech Awards	GCSE
Level 2 Distinction*	8/9
Level 2 Distinction	6/7
Level 2 Merit	5
Level 2 Pass	4
Level 1 Distinction	3
Level 1 Merit	2
Level 1 Pass	1
Unclassified	Fail

Final Grade = L1D (equivalent to a 3)

This means consistent hard work in Year 10 is crucial.



Tips for supporting your child's learning at home

- Use open-ended questions to support how your child manages their time and what they prioritise (i.e., "Tell me what's due this week." "What's your plan for getting ____ done?")
- Encourage a consistent work routine (i.e., homework after dinner.)
- Create a quiet study space/area at home, and ensure they are fully equipped for independent learning.
- Check your child's homework diary weekly (sign it and monitor what needs to be done.)
- Provide a balanced diet (a protein-rich breakfast is the most important meal for learning!)
- Teenagers are advised to have at least 8 hours of sleep a night to support brain development and learning. Encourage a healthy sleep routine.



Southfields
Academy

Year 10 Revision Advice for Parents and Students

Organising Your Revision

10 Tips (from other pupils)

1. Produce a revision timetable
Start revising early and have a revision plan in mind so that you feel in control of your work rather than seeing it as an impossible mountain towering over you.

2. Allow yourself repeated short breaks
After a certain length of time, you won't be able to take any more in. Try to revise sensibly. Organise revision slots into half hour chunks. Take a break after each half hour.

3. Have a revision-free day once a week.

4. Turn off the TV
Some people like to have suitable music playing on a low volume in the background but the TV is too big a distraction.

5. Be focussed on revision
You've got to want to learn things properly. If you're just passing 30 minutes 'revising' with the real focus in mind of leaving revision as soon as possible to go out you simply will not concentrate properly. Have clear and specific goals for each revision period for example: 'At the end of this session, I will be able to label a diagram of the heart and answer a question on how the heart works.'

What can parents do to help?

10 Tips (from other parents)

1. Work with your child to put together a realistic revision timetable. Marathon revision sessions are not effective. Little and often is usually best.

2. Support your child in sticking to the revision plan and keeping to the start and finishing times they have agreed.

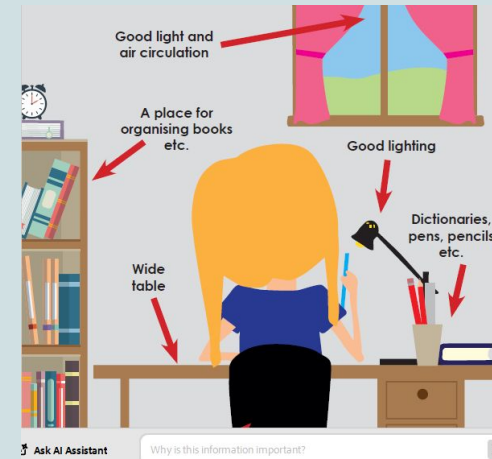
3. Be flexible - if they want to go out to a party on a revision night, agree when they will make up the time.

4. Keep it positive - tick off revision tasks that have been completed.

5. Show an interest in how the revision is going talk through any difficulties and be prepared to help them reschedule their planning as necessary.

6. Encourage your child to attend extra revision sessions after school or the Homework and Revision Centre.

Revision Advice Booklet





Mr Lamboi - Head of Year 10

Our Vision

All students leave Southfields Academy empowered with the qualifications, character, and confidence to thrive — whether at university or in a fulfilling and meaningful alternative path.



Year 10 Tutors



Ms Atley
Mr Qvortrup
Miss Felbinger
Ms Bensalah
Ms Croissant
Ms Lanning
Miss Meah





How is student progress information shared?

“Home-school communication is an integral part of student success. It is therefore essential that we have up-to-date contact details for you!”

- **MyChildAtSchool**
Please ensure you have activated your account!
- **Calls, texts and emails**
This will come from a range of staff, not just the pastoral team.
- **Parents' Evening**
Thursday, 4th December 2025, 5-7pm

Supporting Your Child's Mental Wellbeing Through GCSEs

The GCSE period can be a stressful time for both students and parents. Here are some tips to help support your child's mental wellbeing:

Open communication

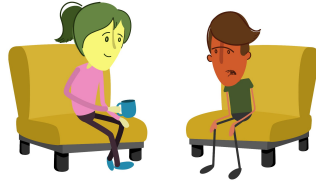
- Create a safe space
- Active listening

Stress management

- Time management
- Mindfulness/relaxation
- Positivity

Healthy Habits

- Balanced diet
- Regular exercise
- Sufficient sleep



1:1 counselling sessions for a range of issues



Break free from tobacco and nicotine-based products



EWPs
Education Wellbeing Practitioners

1:1 guided self-help for worries, anxiety, low-mood, anger, sleep habits, and self-motivation

Who can **Listen** at Southfields Academy?

FREE 2B
ALLIANCE



1:1 support for LGBTQ+ students on alternate Fridays

School Nurse



Our visiting school nurse is here every Friday in Room B156.

Break-time, Drop-in Support



Ms Nearn is available for a 1:1 chat in room B160.

Punctuality matters

Attendance matters more.

Getting your child to school on time really matters

If in a school year your child is late everyday	Your child would have lost approximately	Or they would have missed approximately
5 Minutes	3 days from school	16 lessons lost
10 Minutes	5 days from school	32 lessons lost
15 Minutes	8 days from school	48 lessons lost
20 Minutes	11 days from school	63 lessons lost
30 Minutes	16 days from school	95 lessons lost

ATTEND TO ACHIEVE!

Attendance percentages as Number of days and lessons missed from school.
Students are required to attend school for 190 days each year.

Attendance during one school year	Equals days absent	Which is approximately weeks absent	Which means this number of lessons missed	Absence over 5 years
95%	9 days	2 weeks	50 lessons	¼ year
90%	19 days	4 weeks	100 lessons	½ year
80%	38 days	8 weeks	200 lessons	1 year
70%	59 days	12 weeks	300 lessons	1½ years
60%	80 days	16 weeks	400 lessons	2 years
50%	100 days	20 weeks	500 lessons	2½ years

Government (DfE) research suggests that 16 days absence or 92% attendance in any one year equals a full GCSE drop in attainment
How does your attendance compare with this target?

DfE research shows 16 days absence or 92% attendance equals a full GCSE drop in attainment.

Why this matters

Access to desired courses

A good set of GCSEs opens the doors to great universities, apprenticeships, and a wider range of career options.

Higher earning potential

Accessing better us often means better careers and higher earnings over a lifetime.

Competitive Edge

Your children are competing with every other student in the country. Strong GCSE results will give them an advantage

Post-16 Pathways

A Levels and L3 courses

- Designed for those seeking university-level education
- Study a wide range of subjects
- Essential to progress on to university

Apprenticeships

- Practical on-the-job training
- Career focused
- Work experience and a salary
- Can be L2 or L3
- Can apply at any point throughout the year

L2 courses

- L2 BTECs
- Maths and English GCSEs
- Helps on to L3 courses
- Career-focused, so good for those who know what they want to do in the future.



Who do I contact?

- All absences have to be report daily, by 8.30am or your child will be mark as unauthorised.
- Attendance officer
- Phone call, 0208 875 2634 leave a message
- Email, attendance@southfieldsacademy.com (cc you child's tutor into the email)
- Send a message through MCAS (app)



Expectations for KS4

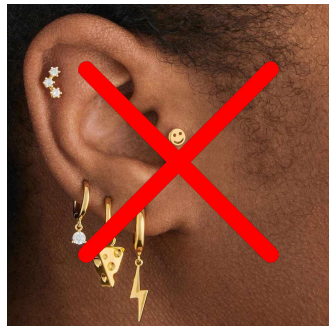
- Excellent attendance and punctuality - Aim for 100%
- Excellent behaviour, conduct, and appearance. “Look smart; act smart.”
- Pupils must catch up on work missed due to authorised absences.
- Behaviour for learning and effort is good or excellent.
- Revise throughout the year rather than “cramming” before assessments or exams. The material your child is learning this year will be in their GCSE exams in year 11. *Regular revision is vital to ensure they do not forget or struggle with the content later.*



Thank you!

Questions?
Contact Mr Lamboi or
Ms Millward

- Thank you for your continued support with uniform.



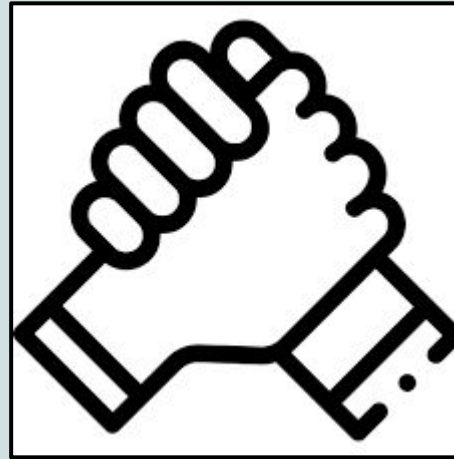
- Please continue to help us look after the little things so that the big things don't happen.



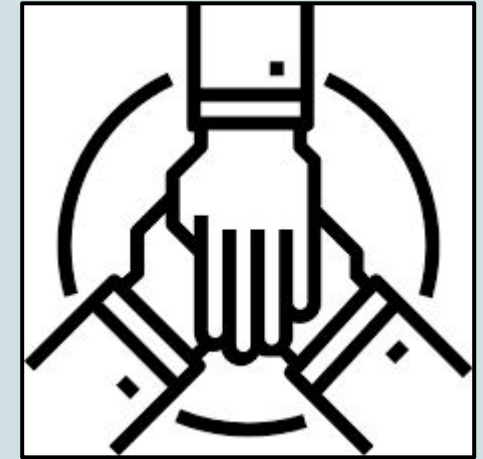
And Finally...



You are the expert on your own child and have always been his/ her most important teacher!



Support, encouragement and interest can make a spectacular difference to motivation and attitude!



All of us working together and communicating will ensure a happy and successful group of students!